

### COMPONENTS

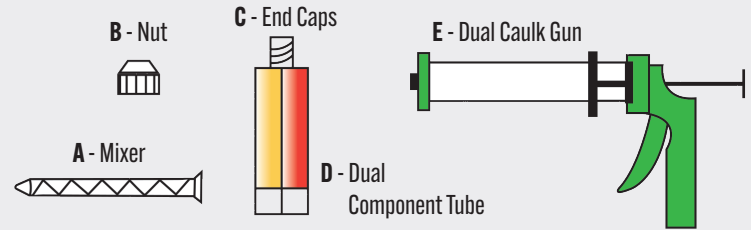
**A** - Mixer

**B** - Nut

**C** - End Caps

**D** - Dual Component Tube

**E** - Dual Caulk Gun



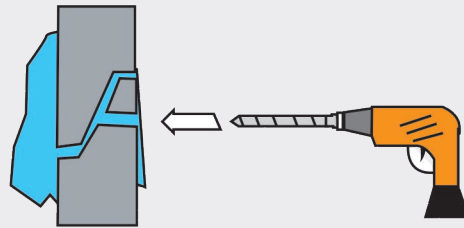
### STEP ONE

Slide **B (Nut)** over **A (Mixer)** thread end first.



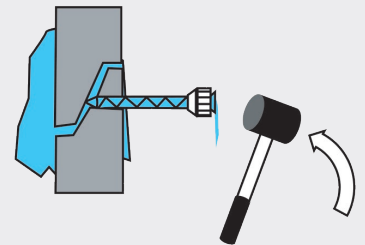
### STEP TWO

Drill 5/8" diameter hole to intersect leak path.



### STEP THREE

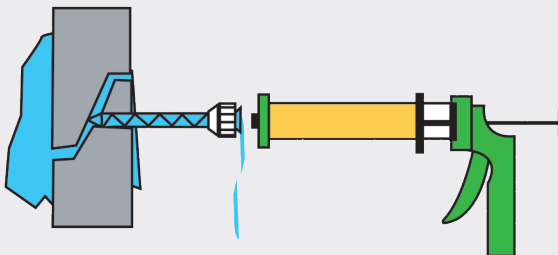
Tap **A+B** into hole until snug.



### STEP FOUR

Prepare gun by pulling back plungers on **E (dual caulk gun)** insert **D (tubes)** while holding vertical, remove **C (end caps)** from threaded end of tubes.

Quickly align threads on **D (tubes)** with **B (nut)** and tighten to secure.



### STEP FIVE

Pump gun vigorously to expel grout to refusal or seal. If grout is washing out either pump slower or stop pumping and watch grout until it reacts halfway down **A (mixer)** then quickly give a pump to expel and repeat.

